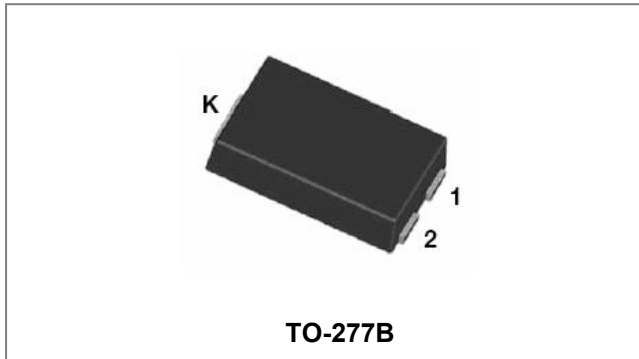


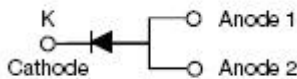
EP5100B SCHOTTKY RECTIFIER



Features

- 175°C T_J operation
- Center tap configuration
- Low forward voltage drop
- High purity, high temperature epoxy encapsulation for enhanced mechanical strength and moisture resistance
- High frequency operation
- Guard ring for enhanced ruggedness and long term reliability
- AEC-Q101 qualified (Automotive grade with suffix "Q".)
- Exsemi technology

Circuit Diagram



Applications

- Switching power supply
- Converters
- Free-Wheeling diodes
- Reverse battery protection

Maximum Ratings:

Characteristics	Symbol	Condition	Typ.	Units
Peak Repetitive Reverse Voltage	V _{RRM}	-		
Working Peak Reverse Voltage	V _{RWM}		100	V
DC Blocking Voltage	V _R			
Average Rectified Forward Current	I _{F(AV)}	50% duty cycle @T _L =125°C, rectangular wave form	5	A
Peak One Cycle Non-Repetitive Surge Current	I _{FSM}	8.3ms, Half Sine pulse, T _c = 25 °C	150	A

Electrical Characteristics:

Characteristics	Symbol	Condition	Typ.	Max.	Units
Forward Voltage Drop*	V _{F1}	@ 5A, Pulse, T _J = 25 °C	0.74	0.78	V
	V _{F2}	@ 5A, Pulse, T _J = 125 °C	0.66	0.75	V
Reverse Current*	I _{R1}	@V _R = rated V _R , T _J = 25 °C	0.5	2	uA
	I _{R2}	@V _R = rated V _R , T _J = 125 °C	200	500	uA
Junction Capacitance	C _T	@V _R = 5V, T _C = 25 °C f _{SIG} = 1MHz	245	-	pF
Voltage Rate of Change	dv/dt	-	-	10,000	V/μs

* Pulse width < 300 μs, duty cycle < 2%

Thermal-Mechanical Specifications:

Characteristics	Symbol	Condition	Specification	Units
Junction Temperature	T_J	-	-55 to +175	$^{\circ}\text{C}$
Storage Temperature	T_{stg}	-	-55 to +150	$^{\circ}\text{C}$
Typical Thermal Resistance Junction to Ambient (NOTE1)	$R_{\theta JA}$	DC operation	75	$^{\circ}\text{C/W}$
Typical Thermal Resistance Junction to Lead (NOTE1)	$R_{\theta JL}$	DC operation	8	$^{\circ}\text{C/W}$
Approximate Weight	wt	-	0.08	g

NOTE: 1. Units mounted on P.C.B., 0.5 x 0.5" (30 x 30mm) copper pads.

Ratings and Characteristics Curves

FIG.1 FORWARD CURRENT DERATING CURVE

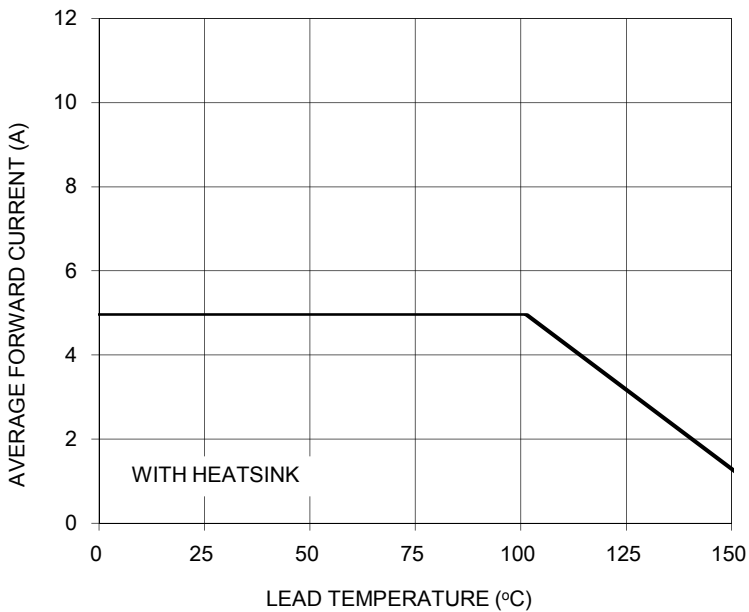


FIG. 2 TYPICAL FORWARD CHARACTERISTICS

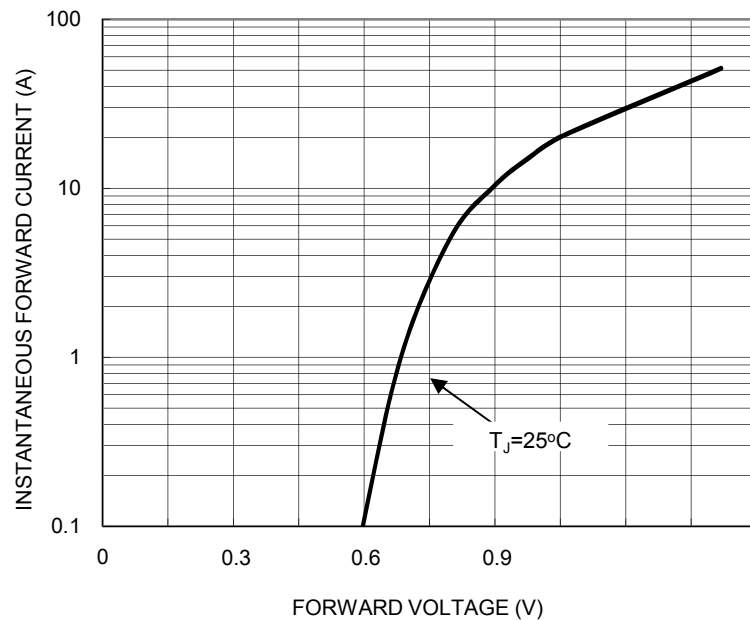


FIG. 3 MAXIMUM NON-REPETITIVE FORWARD SURGE CURRENT

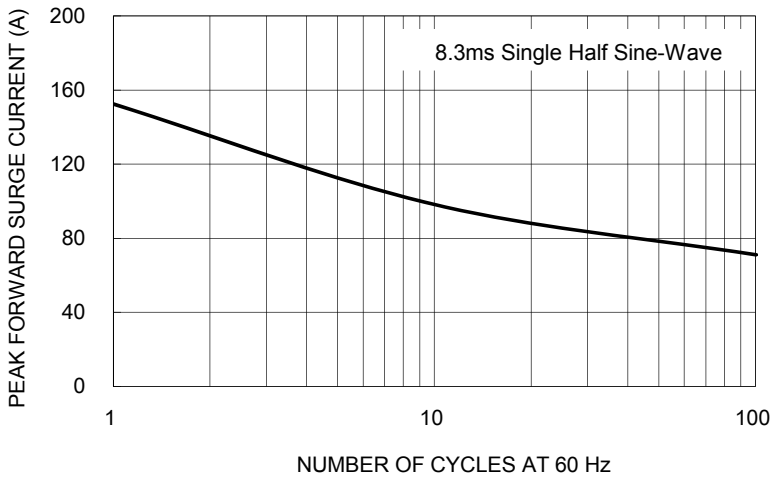


FIG. 4 TYPICAL REVERSE CHARACTERISTICS

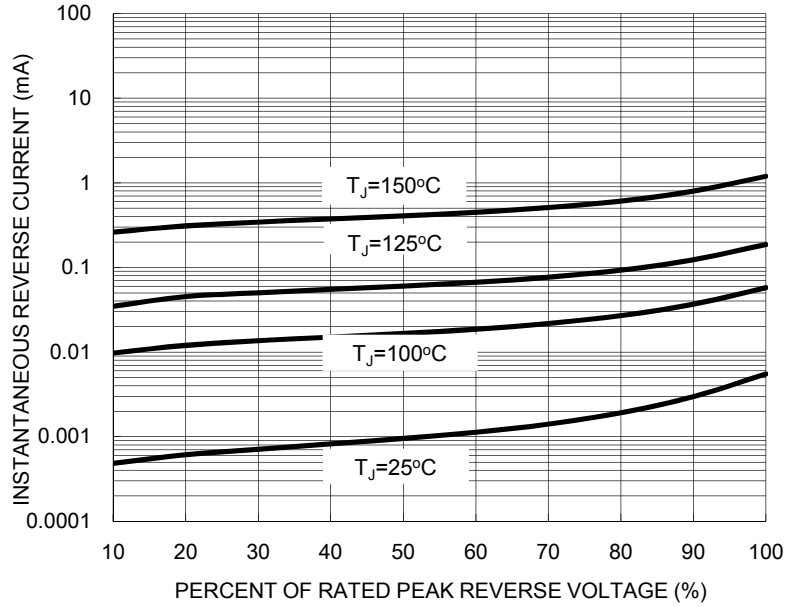
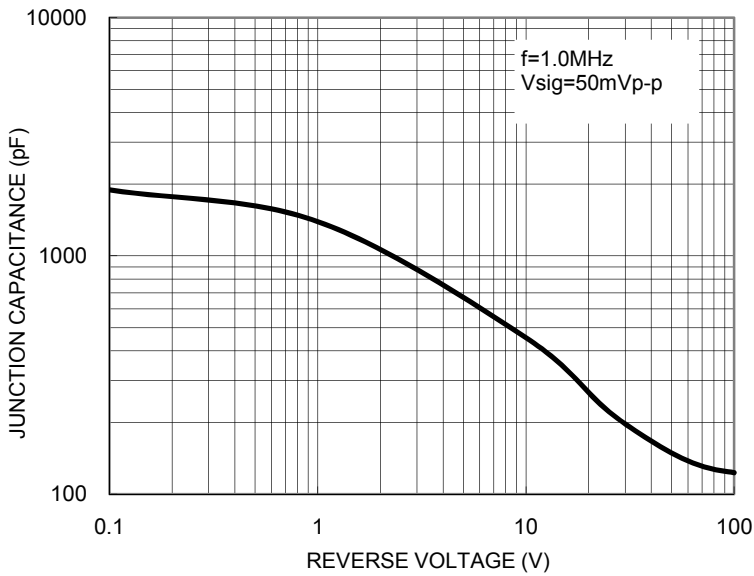
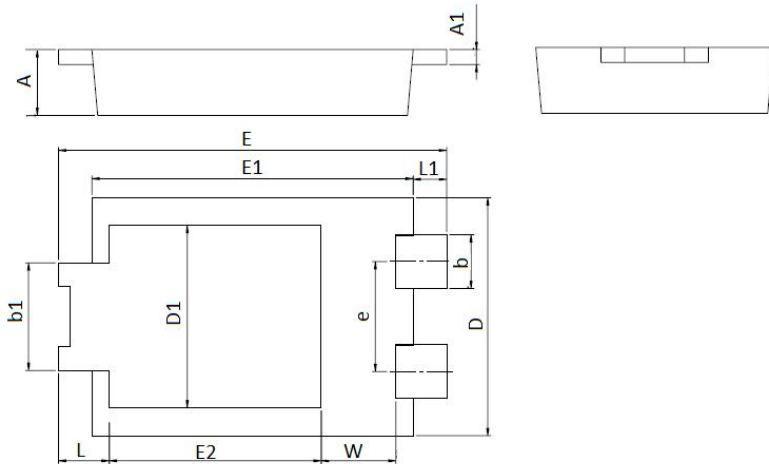


FIG. 5 TYPICAL JUNCTION CAPACITANCE

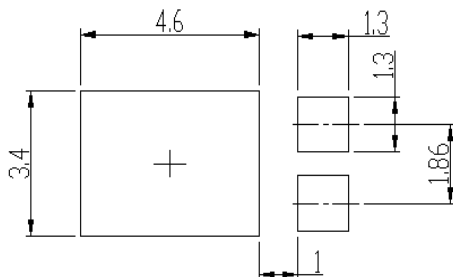


Mechanical Dimensions TO-277B



SYMBOL	Millimeters		Inches	
	Min.	Max.	Min.	Max.
A	0.90	1.25	0.035	0.049
A1	0.20	0.35	0.008	0.014
b	0.85	0.95	0.033	0.037
b1	1.70	1.90	0.067	0.075
D	3.80	4.30	0.150	0.170
D1	2.90	3.40	0.114	0.134
e	1.50	2.10	0.059	0.076
E	6.30	6.70	0.248	0.264
E1	5.28	5.78	0.208	0.227
E2	3.20	3.90	0.126	0.154
L	0.50	1.10	0.020	0.043
L1	0.41	1.00	0.016	0.039
W	1.10	1.40	0.043	0.055

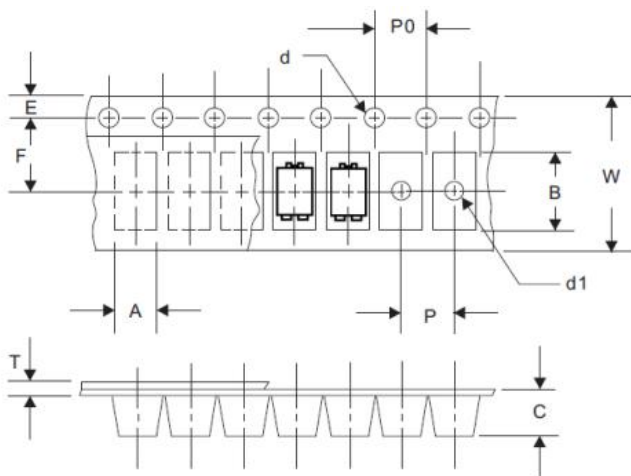
TO- 277B Suggested Pad Layout



Note:

- 1. Controlling dimension: in millimeters.
- 2. General tolerance: $\pm 0.05\text{mm}$.
- 3. The pad layout is for reference purposes only.

Carrier Tape Specification TO-277B



SYMBOL	Millimeters	
	Min.	Max.
A	4.28	4.48
B	6.80	7.10
C	1.30	1.50
d	1.40	1.60
d1	-	1.50
E	1.65	1.85
F	5.40	5.60
P	7.90	8.10
P0	3.90	4.10
T	0.24	0.44
W	11.70	12.30

Ordering Information

Device	Package	Shipping
EP10100T	TO-277B(Pb-Free)	5000pcs/ reel